

Gain 70dB, Output 20dBm

### Overview:

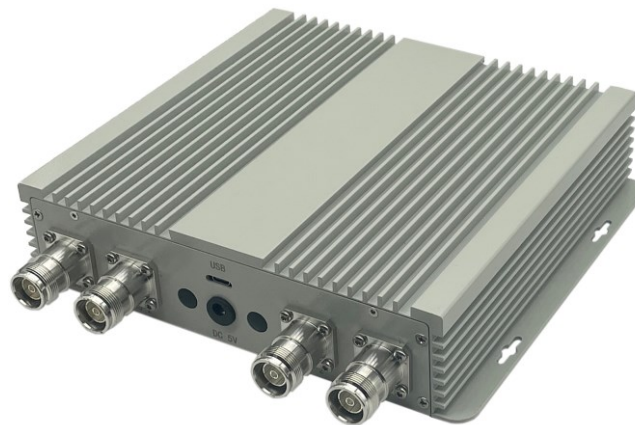
440484 wireless Pico Repeater is a fast and cost-effective solution widely deployed to provide coverage improvement for in-building solution, especially for areas without optical access and emergency coverage, eg. house, apartment or office area 500-1800sq.m.

440484 wireless Pico Repeater receives and amplifies signal from donor BTS. It is a bi-directional amplifier transmitting signal to coverage area, bringing coverage to the shadow or blind area in rural and urban buildings where the BTS footprints can't reach.

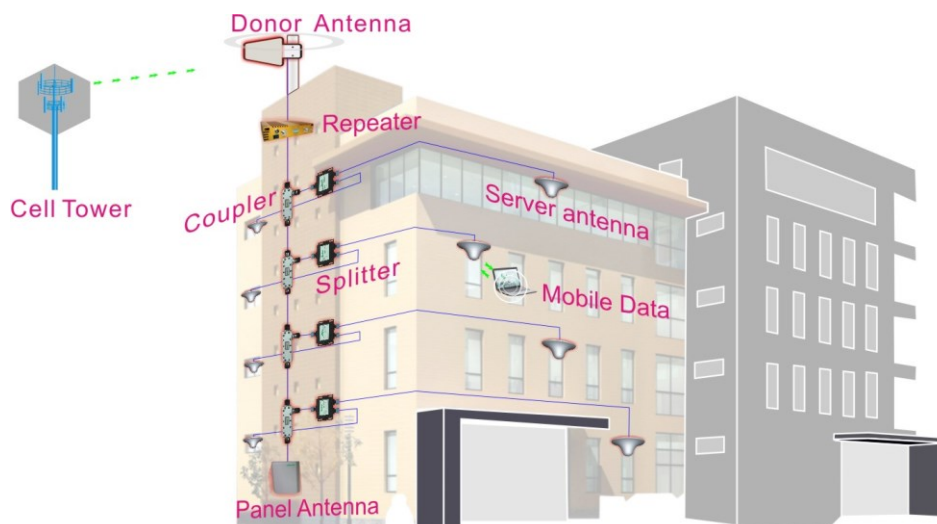
### Features:

- Supports 1800 and 3500
- LCD display the input/output signal strength
- Auto isolation detection
- Auto gain control
- Auto level control
- MGC gain or level control
- Smart LCD to guide the installation

### Product Photos:



### Applications:



**Specification:**

<b>Electrical Data</b>			
<b>Item</b>		<b>Uplink</b>	<b>Downlink</b>
Frequency Range	LTE FDD 1800 Band	1745-1765 MHz	1840-1860 MHz
	NR TDD 3500 Band	3400-3600 MHz	3400-3600 MHz
Bandwidth	LTE FDD 1800 Band	20 MHz	
	NR TDD 3500 Band	100 MHz(fixed)	
Number of sub-band	LTE FDD 1800 Band	1	
	NR TDD 3500 Band	1	
Max. Output Power(dBm)		15	20
Max. Gain (dB)		65	70
Automatic Gain Control		30dB	
MGC (Step Attenuation)		20dB@ 1dB/Step	
Noise Figure (dB) (Max. Gain)	LTE FDD 1800 Band	≤8.0@EBW	
	NR TDD 3500 Band	≤8.0@EBW	
Input VSWR (Power up, Min Gain, Pin=-30dBm)		≤ 2.0	
Ripple	LTE FDD 1800 Band	≤6dB	
	NR TDD 3500 Band	≤6dB	
Out Of Band Gain	LTE FDD 1800 Band	1MHz≤f_offset<5MHz: ≤ 45 dB	
Time Delay (us)		≤ 3.0	
EVM	LTE	≤8.0%	
	NR	≤3.5%	
ACPR	LTE	comply with 3GPP TS 36.106	
	NR	comply with 3GPP TS 38.106	
Frequency Stability(ppm)		≤±0.05	≤±0.05
Spurious Emission (dBm)	LTE	comply with 3GPP TS 36.106	
	NR	comply with 3GPP TS 38.106	
Synchronization Mode		Baseband synchronization	
Impedance		50 Ω	
Power Consumption(W)		≤ 60	
Power Supply		220V AC, DC 12V/7A	

\* MCC reserves the right to make the changes considered necessary in this document.

<b>Environmental Data</b>		
Operating temperature range		-25°C to +55°C
Storage temperature range		-40°C to +85°C
Relative humidity		5% - 80%
Applications		IP43 (Indoor)
Monitoring and control	Local Control	USB (by OMT)
	Remote Control	LTE Modem (Option)
<b>Mechanical Data</b>		
Dimensions		234*230*104 (mm)
Weight		≤6Kg
Connectors type		4*4.3-10 Female
Mounting		Wall
Packing		1 Pie in box